



Confluence of Innovation

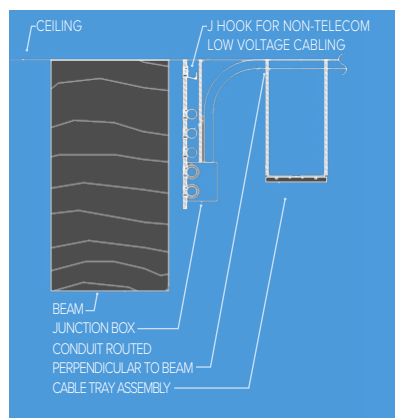
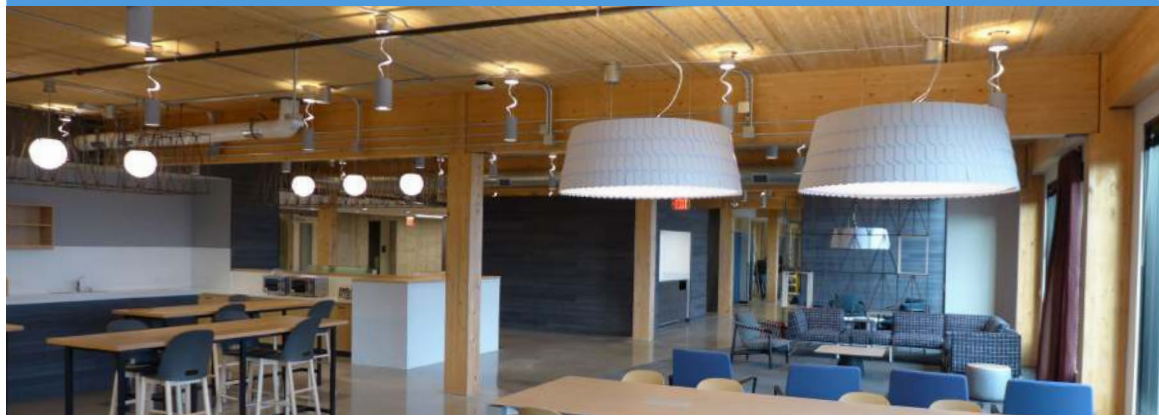
The quest to have the occupied environment emulate nature drives creative solutions. We share this passion to realize aesthetically pleasing, high-performing spaces through well-coordinated efforts.

Character of Space

The science behind attractive spaces that hold their value is found in the details. As more exposed raw materials are introduced to the interior, the emphasis on coordinating life-safety, environmental and connectivity systems pathways with the finishes is heightened.

Repurposed spaces attract new talent

97% millennials and gen z'ers appreciate the value of historic preservation¹

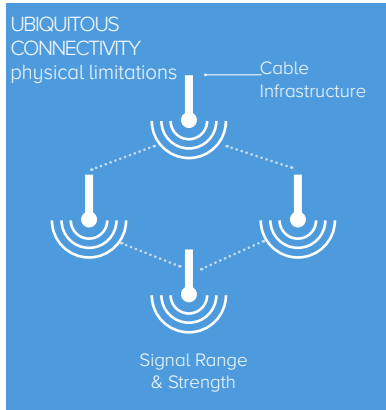


Building Community

Where real estate and talent are tight, amenity space is at a premium. Those spaces that stand out have a creative factor where the anticipated experience is realized or enhanced through mobility, occupant comfort, adaptability and overall system performance.

“cool perks” attract next generation workforce

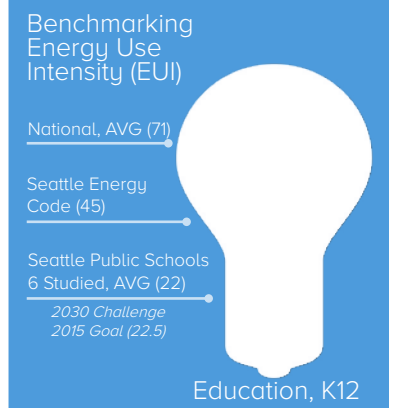
30% of tech workers in major US cities are looking elsewhere²



Measured Performance

The ASCE³ gave Washington a “C” for the health of our public infrastructure and a “C+” for schools. Districts across the state are working to turn that statistic around and have the data to back it up. Seattle Public Schools closed out a six-year bond cycle with measurement and verification of six schools, five of which were designed by Hargis. The results validate the idea that community spaces can perform well, be beautiful and be within budget. [\[more\]](#)

80% Washington K12 Schools capital requests received voter approval for \$3.6+B in funding with over half the measures as first time requests.



HARGIS

CONSULTING ENGINEERS

mechanical electrical commissioning
telecommunications security energy

¹ National Trust for Historic Preservation - *Reclaiming the Past in Bricks and Mortar: New Study Reveals Millennials' Desire to Connect with Historic Places*
² HR&A study for Friends of Waterfront Seattle - *Beyond Real Estate Increment: The Value of the Central Seattle Waterfront*
³ American Society of Civil Engineers 2019 Washington Infrastructure Report Card